

# 12 ft. Extended Camera Pole

## CPRSAD12XX

CATALOG NUMBER

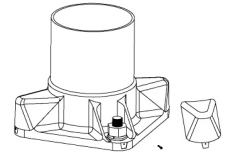
FINISH

### Pole

The pole shaft will be constructed of seamless extruded tube of 6063 Aluminum Alloy per the requirements of ASTM B221. The shaft assembly shall be full-length heat treated after base weld to produce a T6 temper.

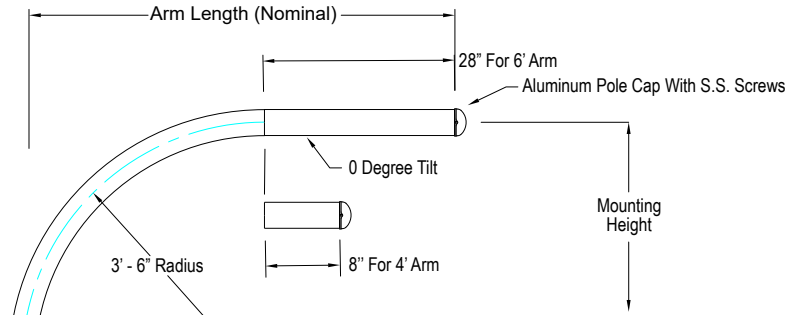
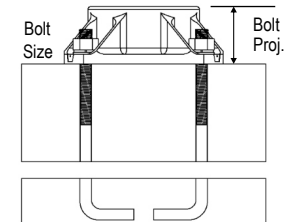
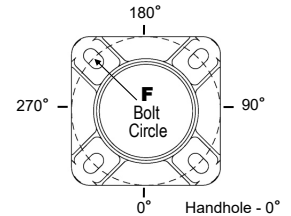
### Base Style

4-Bolt Cast Aluminum Base Flange of Alloy 356-T6 with Aluminum Bolt Covers (Alloy 356-F) and Stainless Steel Hex Head Attaching Screws.



### Anchorage

Anchorage Kit will include four (4) L-shaped Steel Anchor Bolts conforming to AASHTO M314-90 Grade 55. Ten inches (10") of threaded end will be galvanized per ASTM A153. Kits will contain four (4) Hex Nuts, four (4) Lock Washers, and four (4) Flat Washers (all components Galvanized Steel). A bolt circle template will be provided.



Part Number	Mounting Height	Arm Length
CPRSAD12XX	12'	4'
CPRSAD12XX	12'	6'

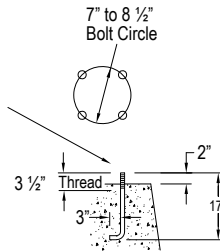
Dark Bronze	BR
Black	B
Gray	GR
White	WH

ie. CPRSAD124BR

Internal Damper (Factory Installed)

4 1/2" O.D. Alum. Tube  
.188" Wall Alloy 6063-T6  
Satin Ground Finish

- (4) 3/4" - 10NC Galv. Stl. Anchor Bolts, AASHTO M314 - 90 Grade 55, 10" of Threaded End Galv. Per ASTM A153.
- (4) 3/4" - 10NC Galv. Stl. Hex Nuts
- (4) 3/4" Galv. Stl. Lockwashers
- (4) 3/4" Galv. Stl. Flatwashers



3" x 5" Reinforced Handhole (80309)  
With Lap-Type Cover And S.S. Screws.  
Install Ground Lug Opp. HH

1'-6" Base Flange Alloy 356-T6 With Bolt Covers And S.S. Hex Hd. Screws

**WARNING:**  
Do not install pole without equipment.

Satin Aluminum or Powder Coated Finish per Customer Specification.

EPA Notes: Effective Projected Area (EPA) in square feet. EPA's calculated using wind velocity (mph) indicated in accordance with 2009 AASHTO LTS-5 using a 25 year design life. Maximum EPA is based on the luminaire weight shown. Increased luminaire weight may reduce the maximum EPA. If weight is exceeded, or if other design life or code is required, please consult the factory.

Mounting Height	Extended Section	Bolt Circle	Bolt Size	Maximum EPA 4', 100 MPH	Maximum EPA 6', 100 MPH	Wall Thickness B
12'	4' or 6'	7"- 8.5"	0.75"x 17" x3"	6.8	5.1	0.188

